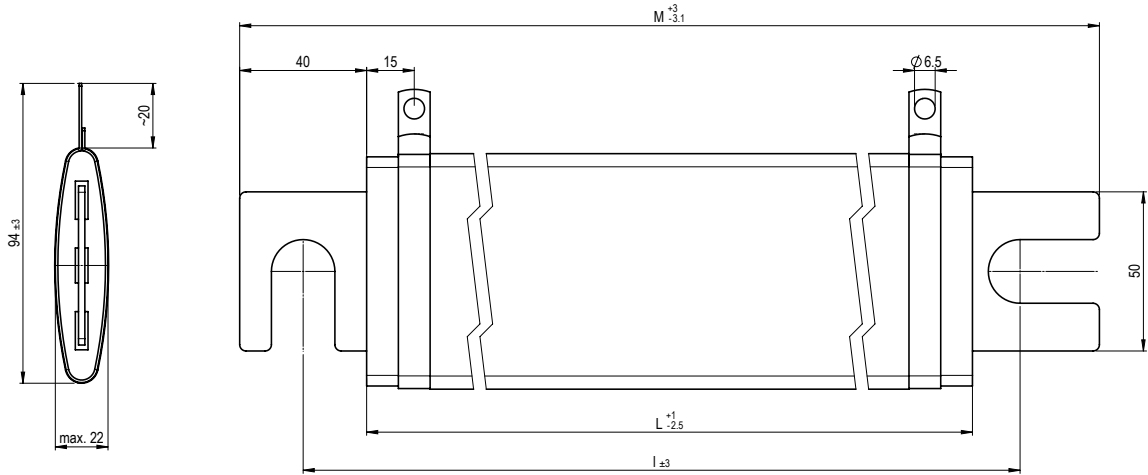
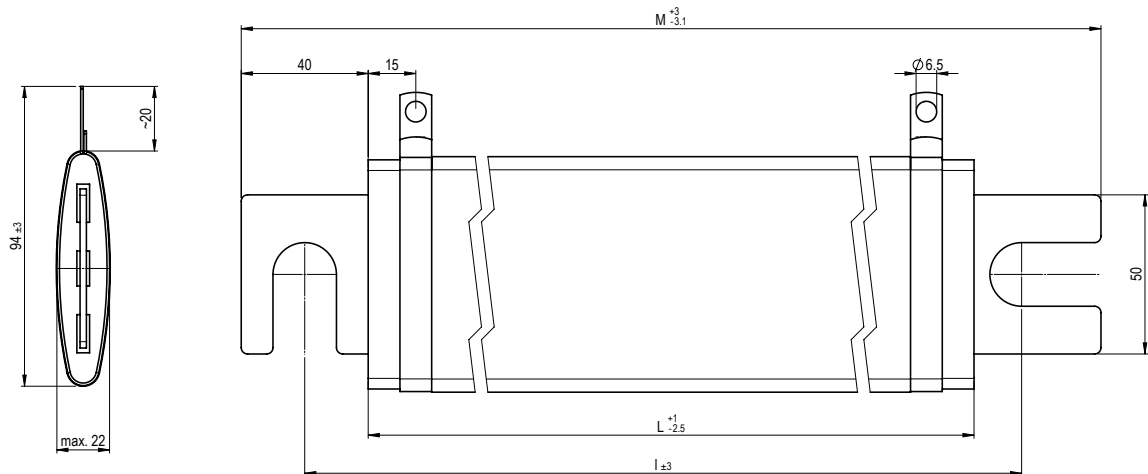


Zementierte flachovale Drahtwiderstände Typ SCE 70  
 Flat-oval wire-wound cemented resistors type SCE 70  
 Résistances plat-ovale bonbinées cimentées type SCE 70



Dimensionen Dimensions Dimensions	SCE 70.240	SCE 70.300	SCE 70.360	SCE 70.400	SCE 70.500
<b>I</b> [mm]	275	335	395	435	535
<b>L</b> [mm]	240	300	360	400	500
<b>M</b> [mm]	320	380	440	480	580
<b>Gewicht</b> Weight [g] Poids	575	700	830	910	1120

Zementierte flachovale Drahtwiderstände Typ SCE 70  
 Flat-oval wire-wound cemented resistors type SCE 70  
 Résistances plat-ovale bonbinées cimentées type SCE 70



<b>Eigenschaften</b> Characteristics propriétés	SCE 70.240	SCE 70.300	SCE 70.360	SCE 70.400	SCE 70.500	
Power rating	500 W	750 W	900 W	1050 W	1300 W	
<b>Temperaturerhöhung</b> Temperature increase	365°C	375°C	375°C	380°C	380°C	
Absorbed energy @ $\Delta T=250^\circ\text{C}$ J	40'000	50'000	60'000	70'000	90'000	
Absorbed energy in 5" overload J	25'000	35'000	45'000	50'000	65'000	
<b>Widerstandswertbereich</b> Resistance range Resistance région	2R0 - 10K	2R0 - 18K	3R0 - 27K	4R0 - 36K	5R0 - 47K	
<b>Widerstandswert-Toleranz</b> Resistance tolerance Resistance tolérance	± 5%					
<b>Induktivität @ 1'000 Hz</b> Inductance @ 1'000 Hz Inductance @ 1'000 Hz	μH	60 - 600	70 - 750	80 - 900	90 - 1000	100 - 1200
Limit element voltage	2'500 V	3'000 V	3'500 V	4'000 V	5'000 V	
Insulation resistance @ 1 kVDC	≥ 1000 M Ω (between termination and bracket)					
Dielectric strength @ 50 Hz for 1'	3'500 Vrsm. (between termination and bracket)					

**Andere Widerstandswert-Toleranzen, auf Wunsch**  
 Other resistance tolerances on request  
 Autre tolérances sur les résistances, sur demande

**Induktionsarme Widerstände „N“, auf Wunsch**  
 Non-inductive resistors „N“, on request  
 Résistances à faible induction „N“, sur demande